

## Chapter-6

### Creating a Drill Down Report in SSRS

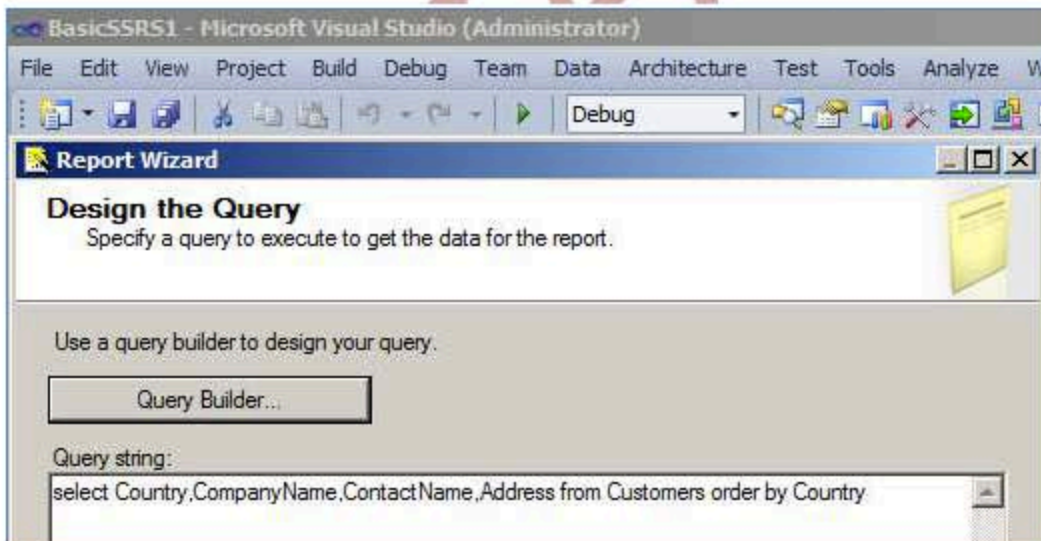
Drilldown/Tree view report is actually a group by report but displaying only the summary at first instance and we can see the further detail on clicking + sign on grouped column as shown below.

Country	Company Name	Contact Name	Address
Argentina	Cactus Conidas para llevar	Patricio Simpson	Cerito 333
	Océano Atlántico Ltda.	Yvonne Morcada	Ing. Gustavo Morcada 8585 Piso 20-A
	Rancho grande	Sergio Gubierrez	Av. del Libertador 900
Austria			
Belgium	Mason Dewey	Catherine Dewey	Rue Joseph-Beno 532
	Suprêmes délices	Pascale Carlier	Boulevard Trous, 255
Brazil			
Canada			
Denmark	Vaffeljernet	Palle Ibsen	Smøgevej 40
	Sirons bistro	Jytte Petersen	Vindbæltet 34
Finland			
France			
Germany			

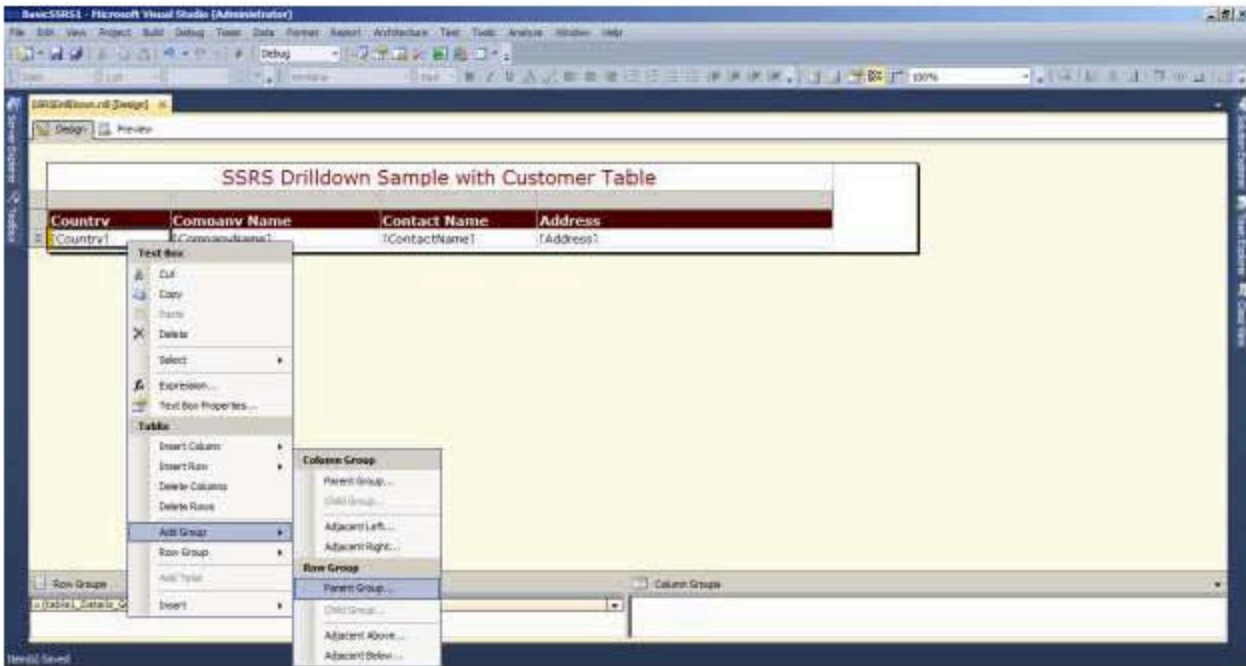
So in Chapter-6 we are going to design Drilldown report as shown above. It is very simple to design using SSRS. The steps to do so are

Step 1: Open the SSRS Reporting Project of Chapter-5 with shared data source and create a tabular report with following query on Northwind database with country as first column.

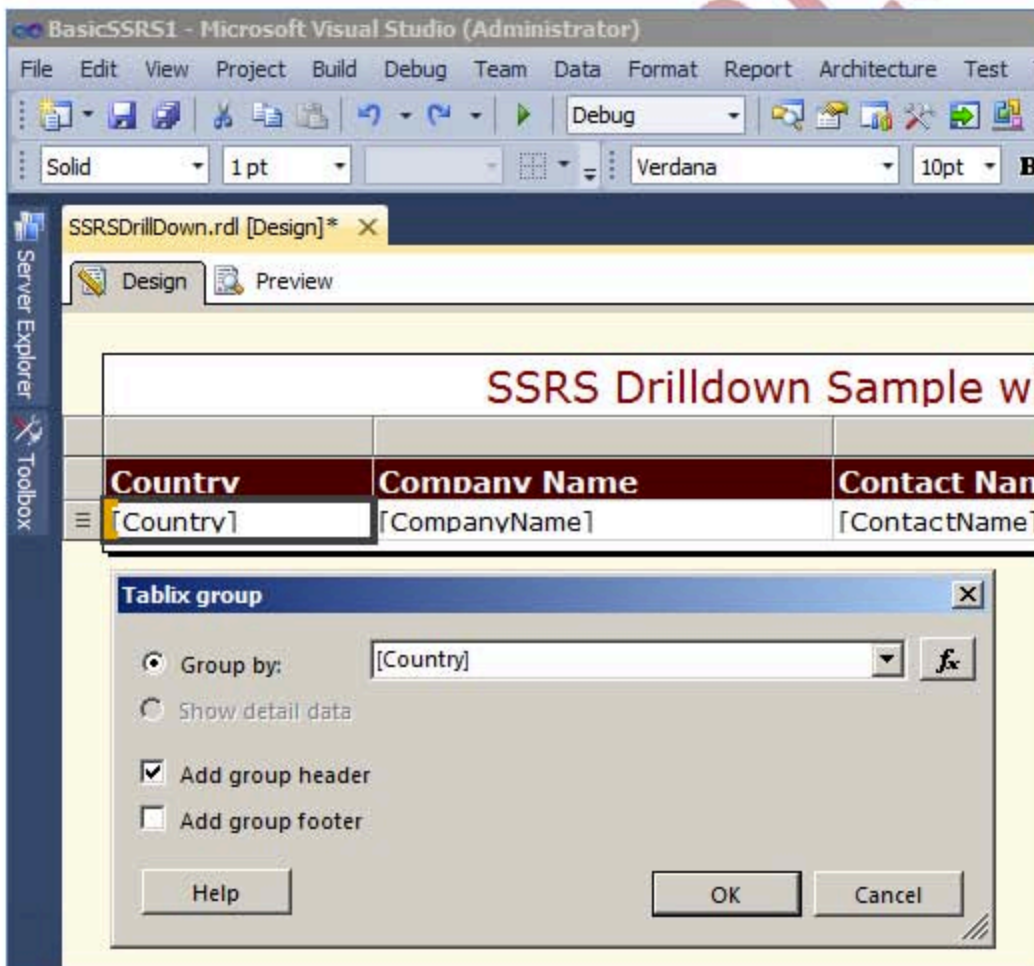
```
select Country,CompanyName,ContactName,Address from Customers order by Country
```



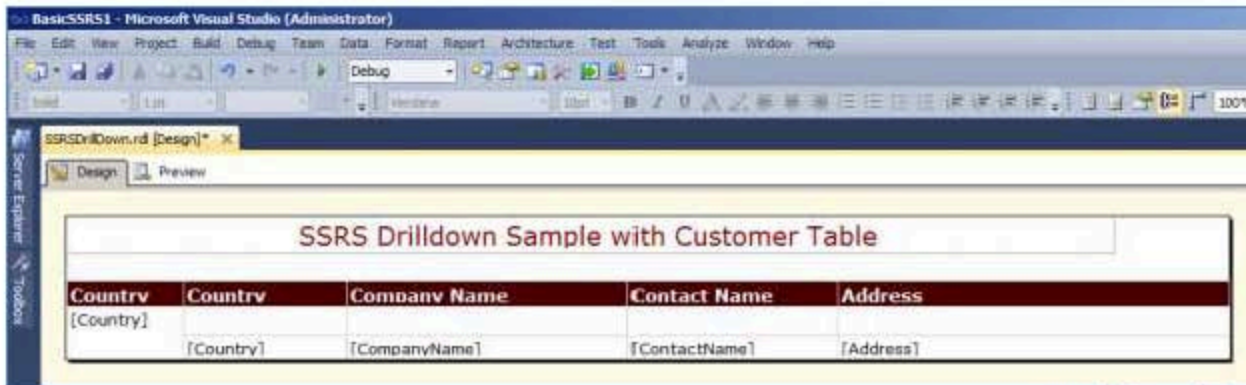
Step2: Add **Parent Group** for country field as shown



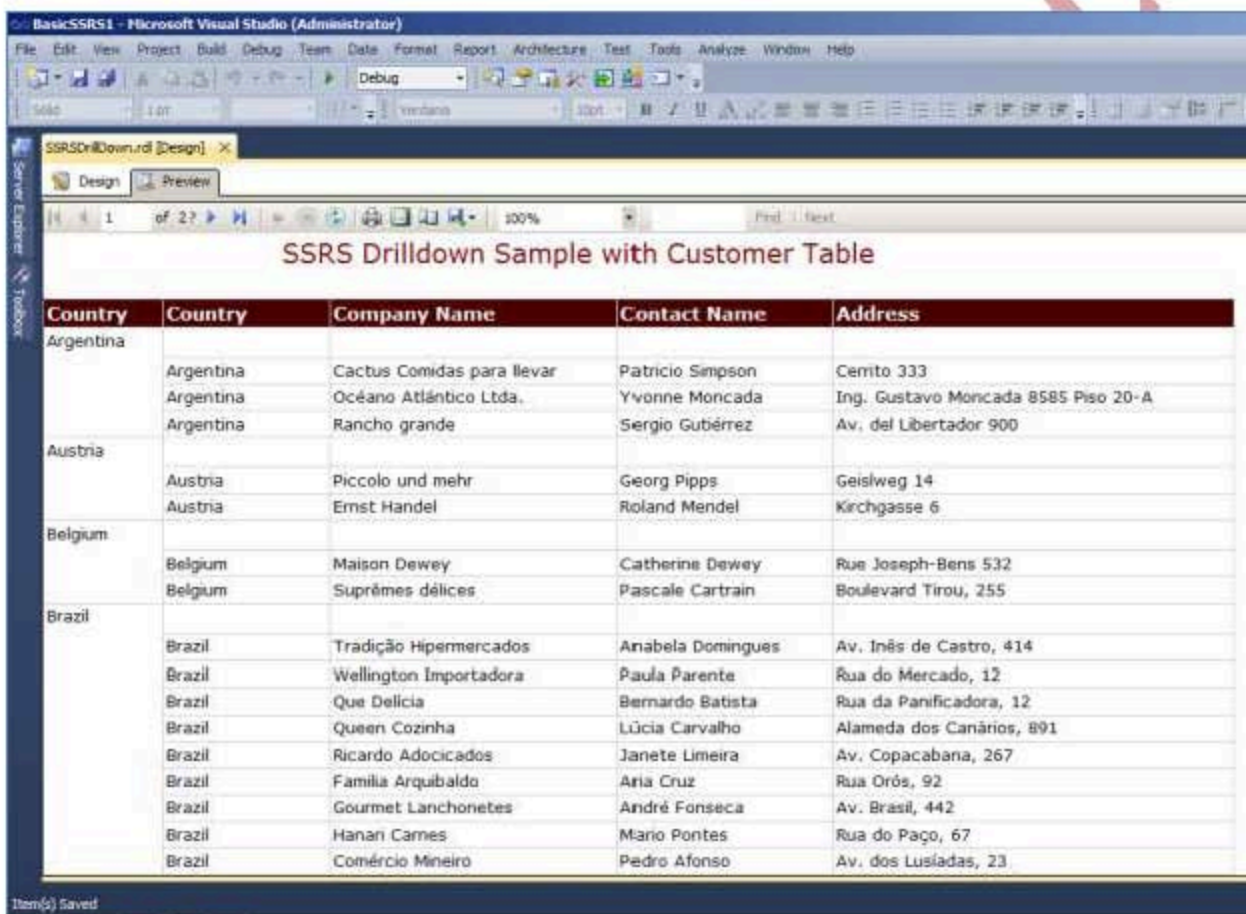
Step 3: From the **Tablix Group** window, let us choose **[Country]** from Group By DropDown and *check Add Group Header checkbox* and click OK.



The report will look like as under

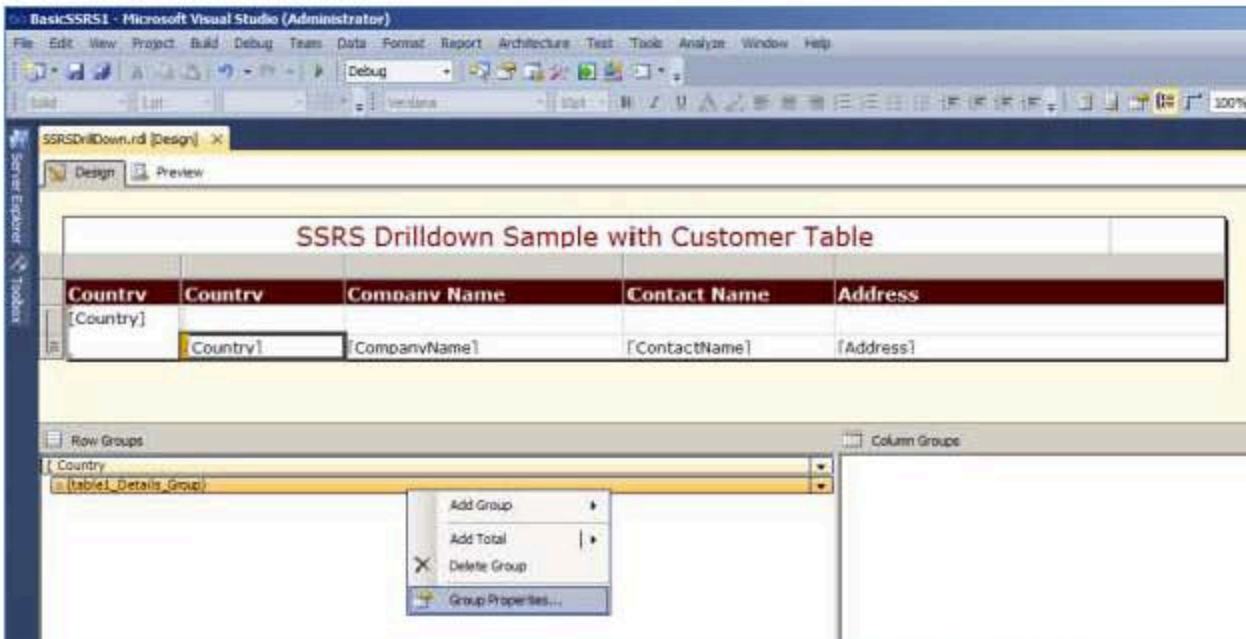


And running the report will yield the following result.

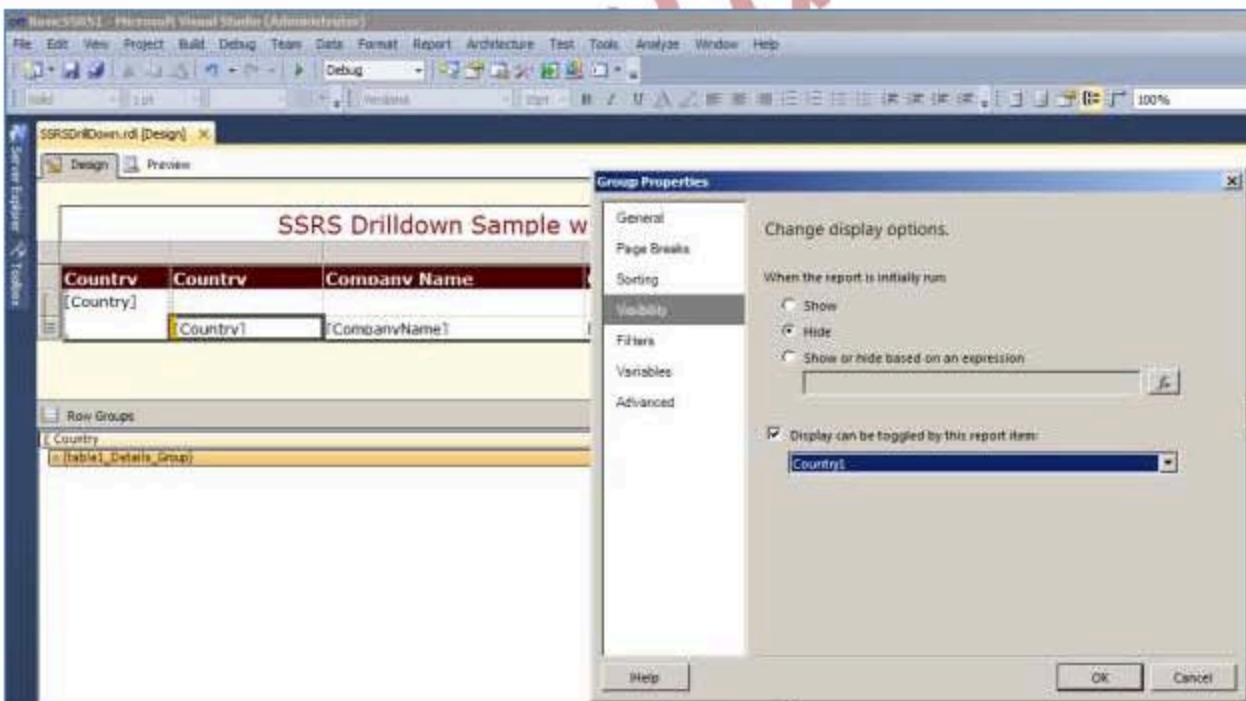


Step 4: From Row groups, choose **[Country] Details** and then choose **Group Properties**.

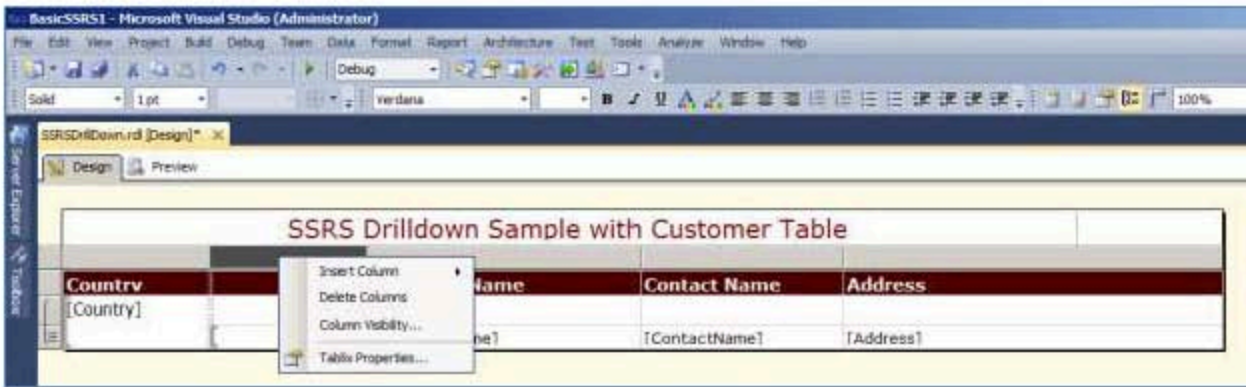




Step 5: From the Group Properties window that opens up, choose Visibility tab. Then select Hide radio button and check the Display can be toggled by this report item checkbox. Then from the drop down that will be enable, select the name of the group which is country1 and click on OK button.



Step 6: Delete the country column from the report design.



Step-7: Report is successfully developed now run the report you will see the following output as.

