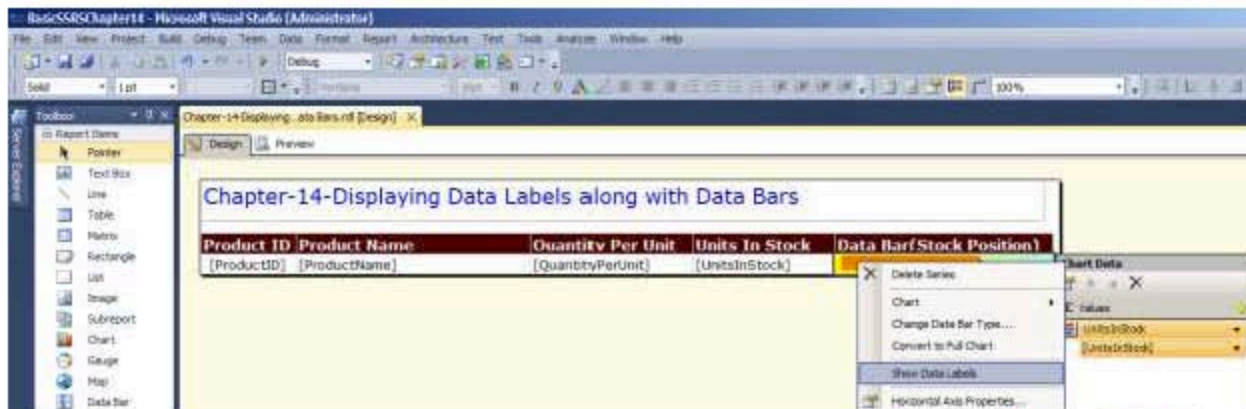
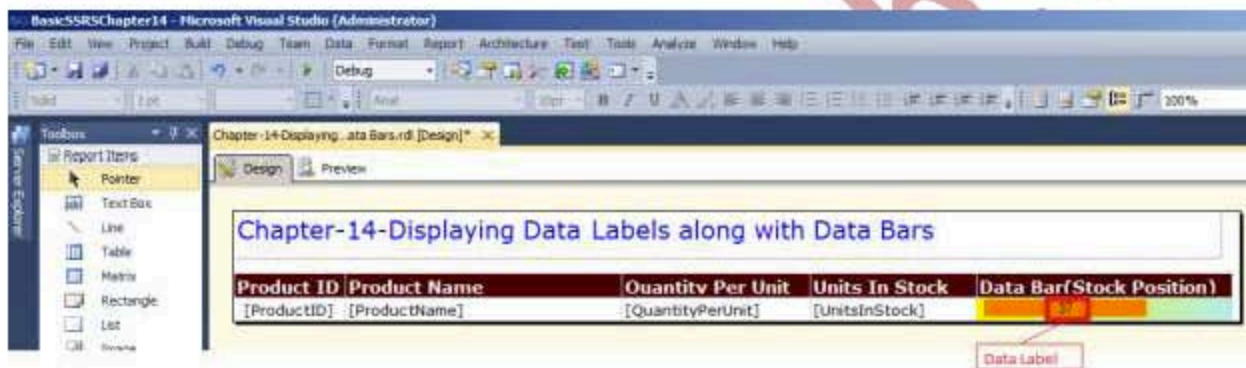


**Chapter-14**  
**Displaying Data Labels along with Data Bars**

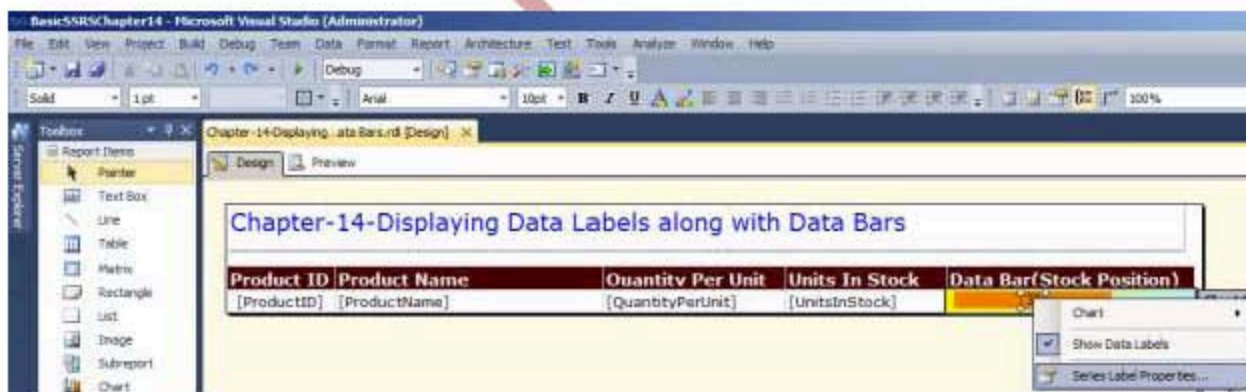
In this tutorial we are going to use the report we have created earlier in "[Chapter-13-Displaying Color in Data Bar Based on Condition](#)". Open the report which was designed in Chapter-13 in design mode. Double click on the Data Bar column "Chart Data", popup will appear instantly, right click on Data Bar Column and choose Show Data Labels as shown in image.



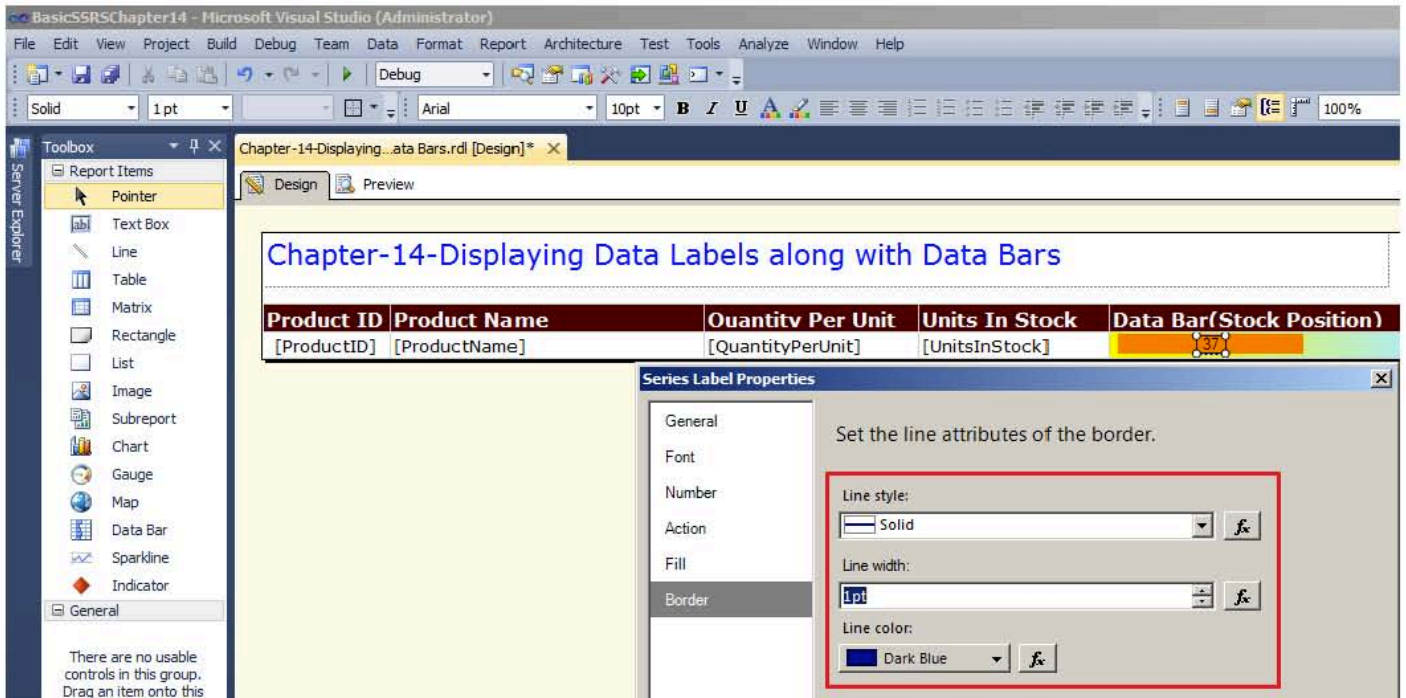
The Data Label appears as shown below



Right click on the Data Label i.e on value 37 and choose the Series Label Properties as shown



A Series Label Properties window will appear now go to the Border tab and set the Line Style to Solid and choose the Line color as desired as shown in the image .



Preview the report. Please Note now Data Bar and the Data Label together coming in the report. This completes **“Chapter-14- Displaying Data Labels along with Data Bars”**.

