

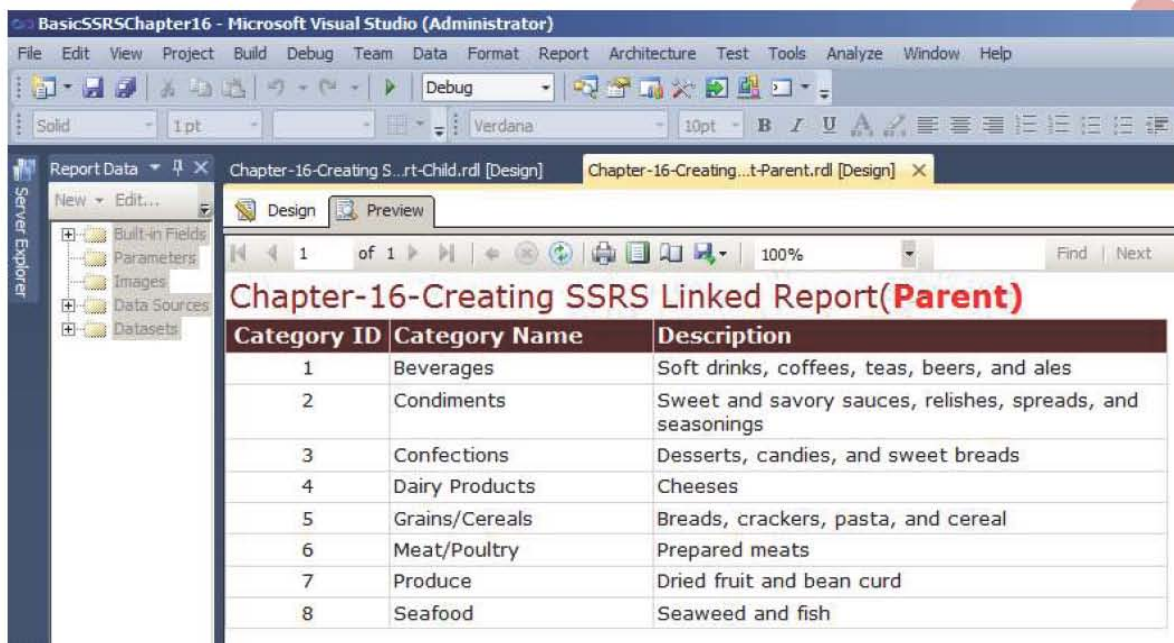
**Chapter-16**  
**Creating SSRS Linked Report**

[www.TexaLab.com](http://www.TexaLab.com)

Linked reports(Child) can be seen as a shortcut to the original report(Parent). Generally it is developed by creating a link on parent report. On clicking the parent report child report is opened on the same window dependent on the parameter values passed.

**Step-1: Designed a simple tabular SSRS Report using the following query as it was designed in “Chapter1-Creating a basic SSRS Report”.**

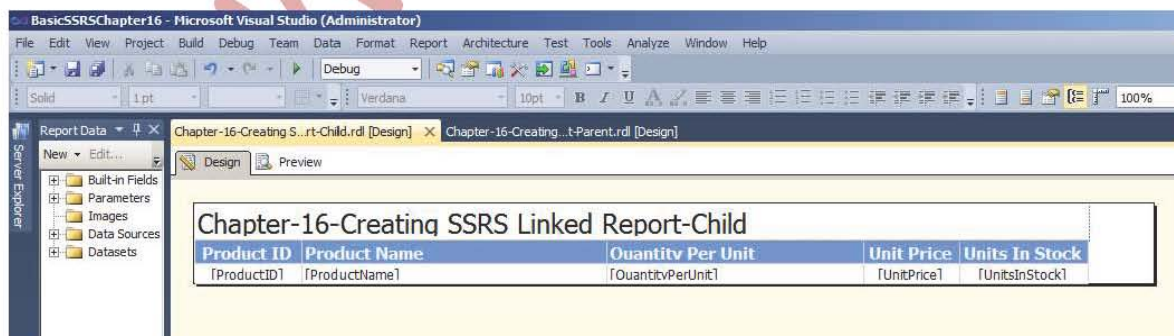
```
SELECT CategoryID,CategoryName,Description,Picture FROM Categories
```



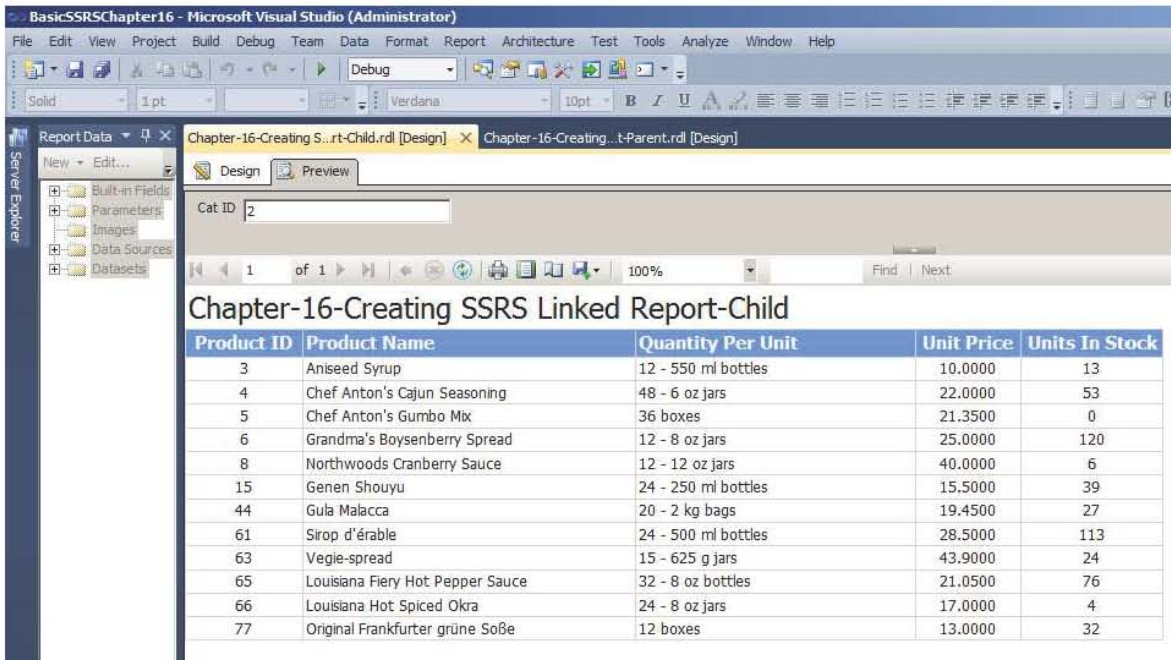
Name this report as “**Chapter-16-Creating SSRS Linked Report-Parent**”, now create a Tabular child report with the following query

```
SELECT ProductID,ProductName,QuantityPerUnit,UnitPrice,UnitsInStock FROM Products where CategoryID=@CatID
```

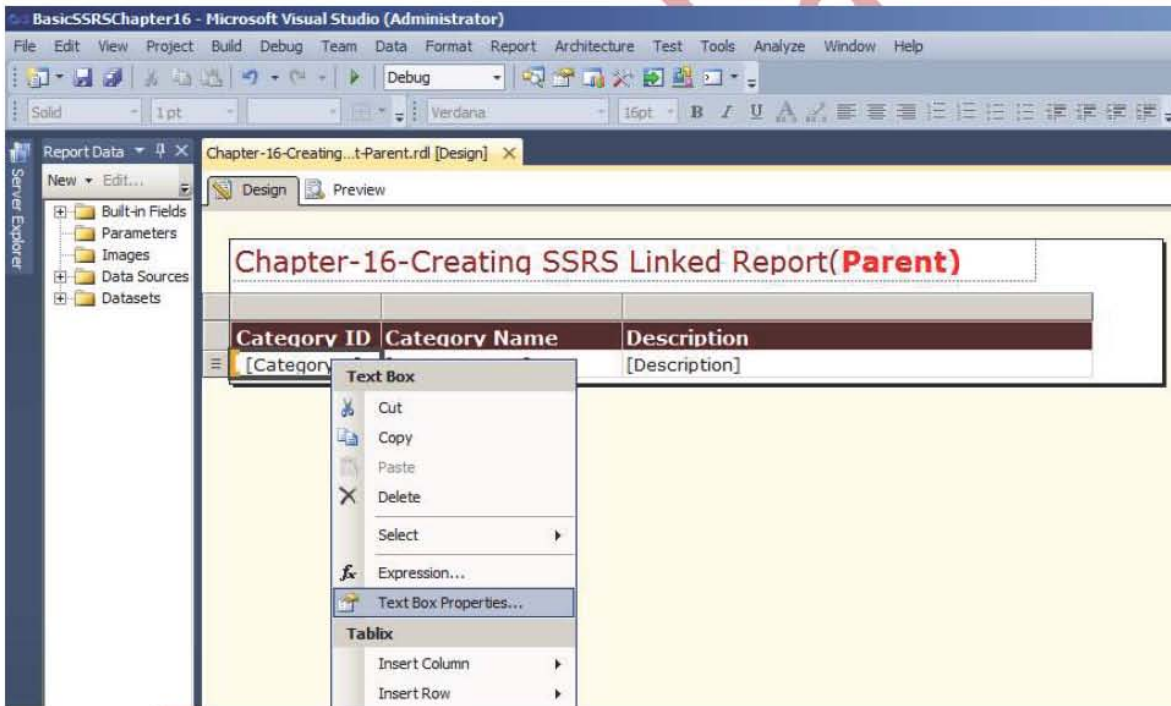
With name “Chapter-16-Creating SSRS Linked Report-Child” as shown in the image.



On Preview of the Report it will prompt for a parameter “CatID”. Provide the specific CatID the report will be generated as given below.



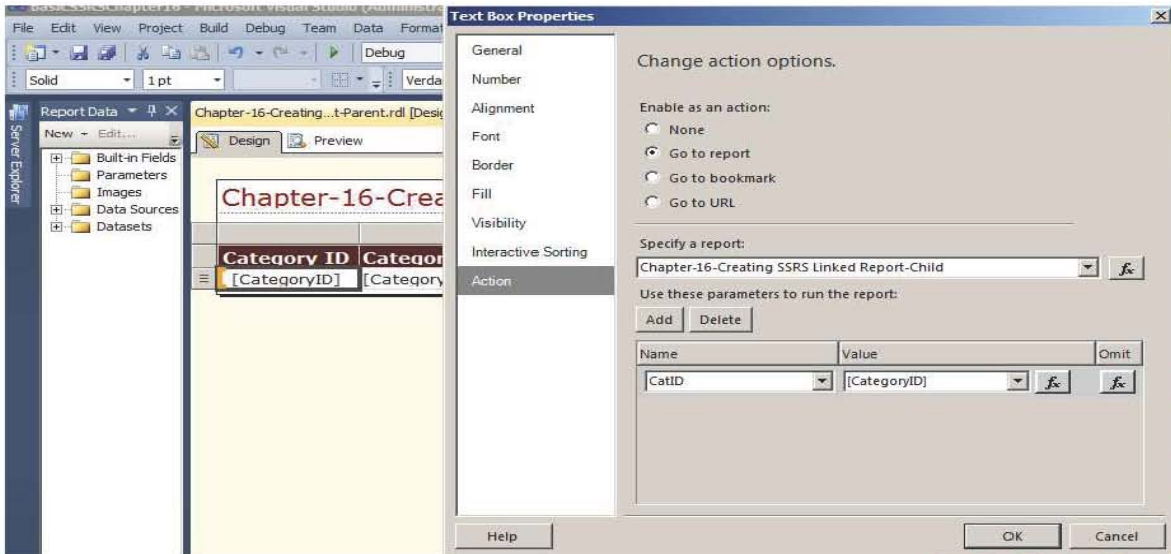
**Step-2: Open the report "Chapter-16-Creating SSRS Linked Report-Child" in the design view and right click on "CategoryID" and choose "Text Box Properties.." as shown.**



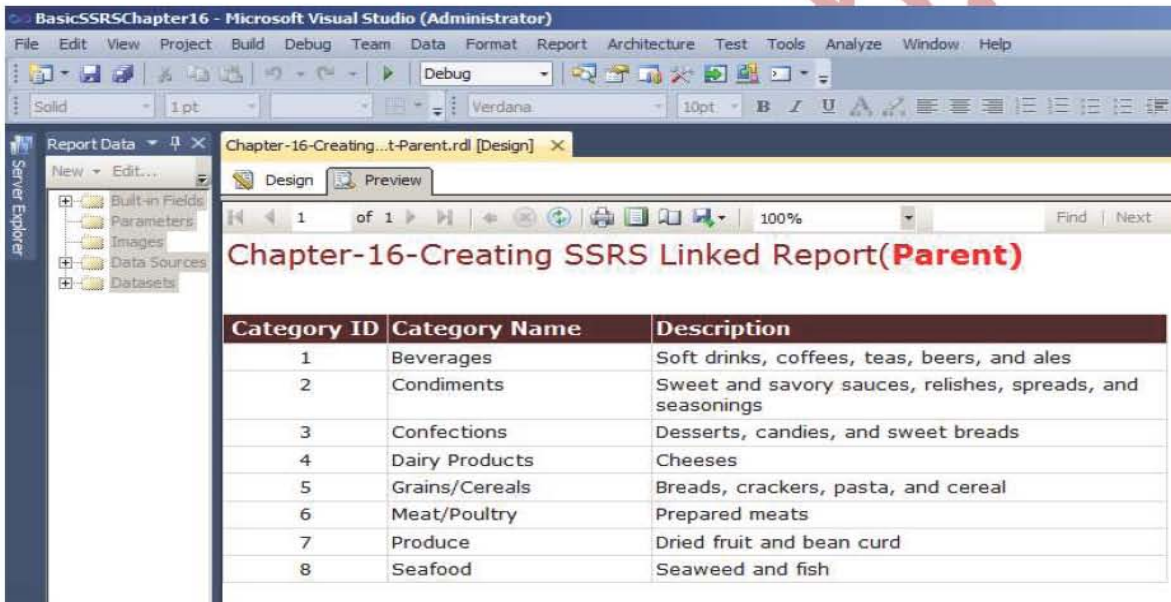
A Text Box Properties window will appear now goto "Action" option as shown and choose the following options

**Enable as an action:** Go to Report

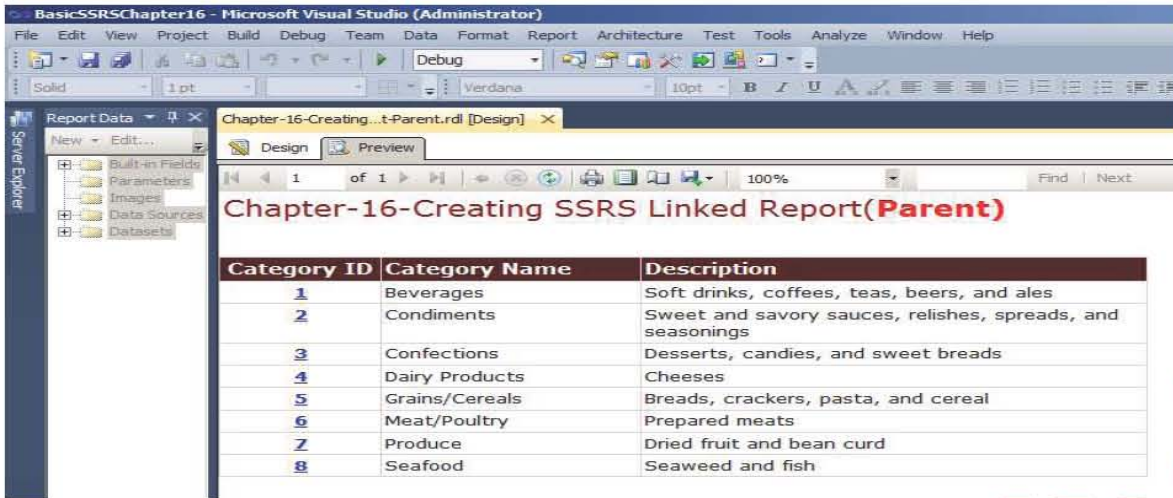
**Specify a Report :**Chapter-16-Creating SSRS Linked Report-Child



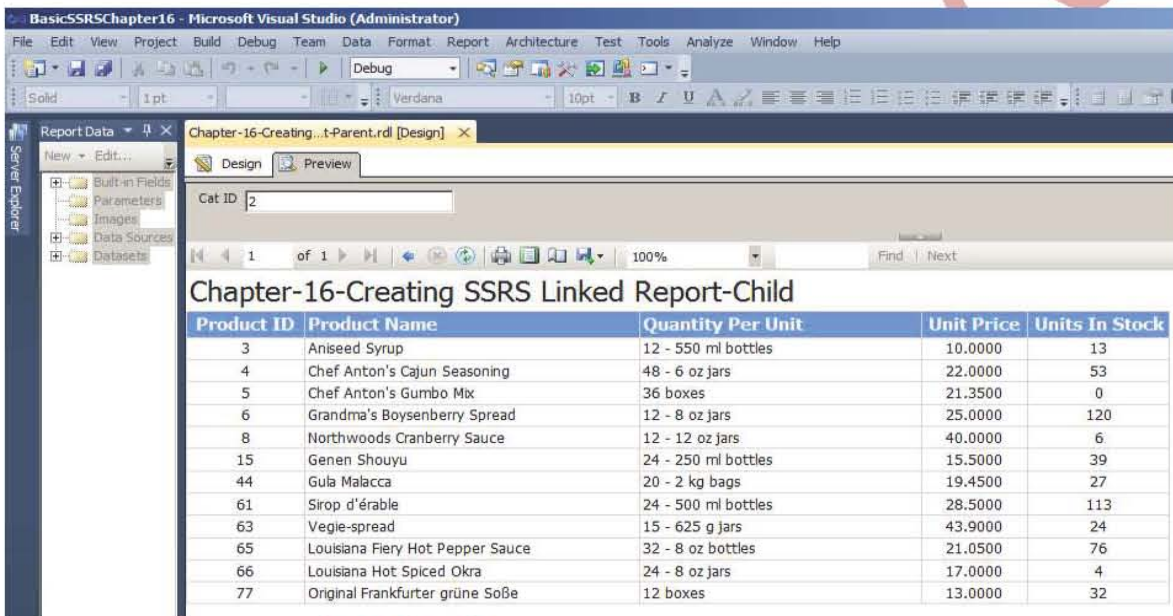
And click on add button to add a Parameter to run the report and set the parameter as shown above on the screen and click on ok. Now Preview the Parent Report it will look as.



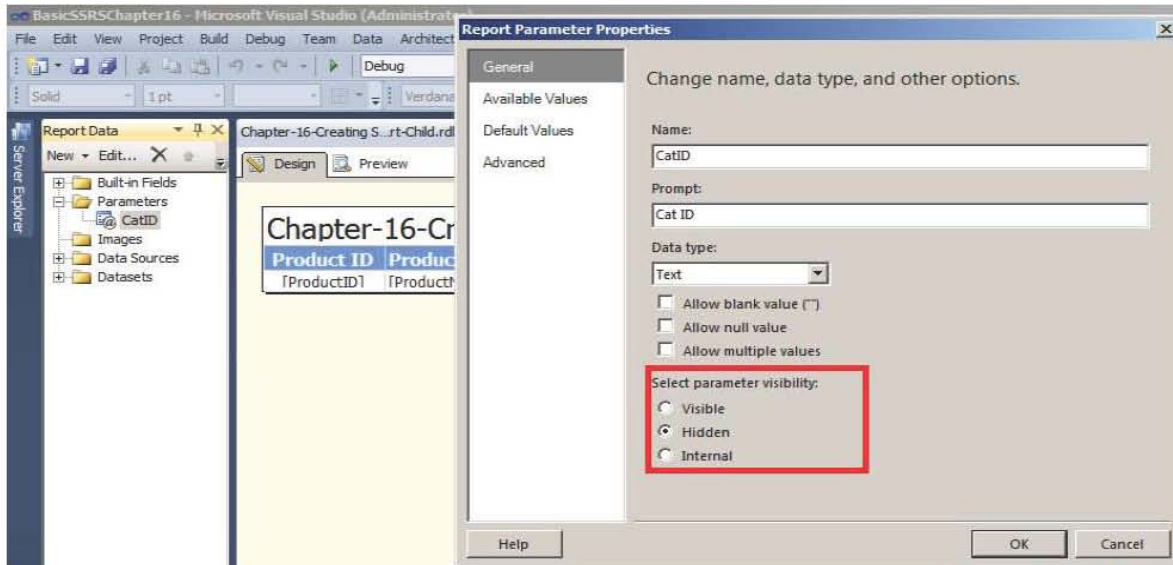
The column "CategoryID" is not shown as Hyperlink so, change the color of the CategoryID to "Dark Blue" its font weigh to Bold and select Underline from the standard toolbar as shown. The Preview of the Report will look as



On Clicking on any of the “CategoryID” value of above Report a Linked Child Report will open as shown below.



Go to Design view of the child report and Double Click on Parameter “CatID” a Report parameter Properties will be opened and choose “Hidden” from Select Parameter Visibility and click ok.



Now Preview the Parent Report and click again on the "CategoryID" now child report will open without showing any parameter value and parameter is passed to child report internally. This completes **"Chapter-16-Creating SSRS Linked Report"**.

