

Chapter-18
Creating Group above or stepped report in SSRS

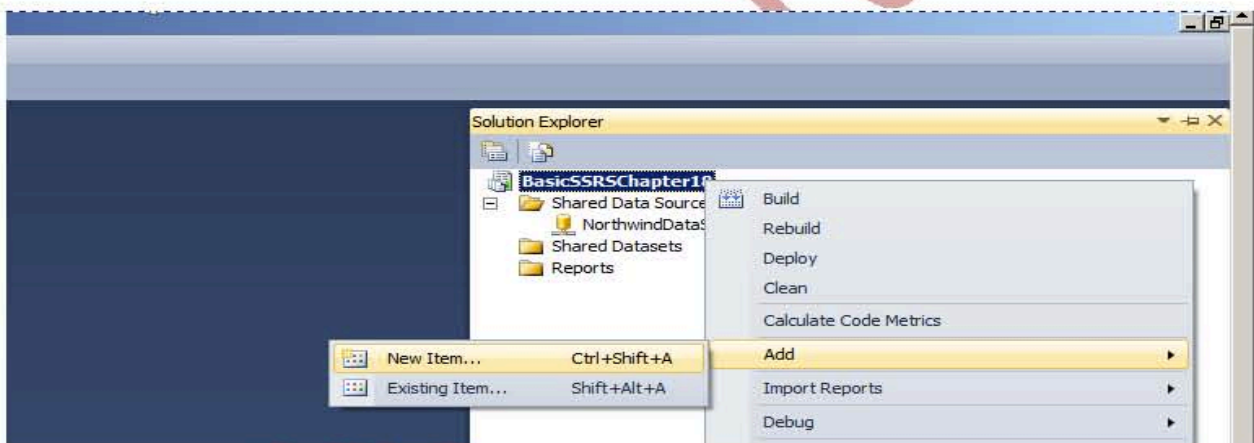
A Group above or stepped report is a type of report that shows detail rows or child groups indented under a parent group in the same column, as shown in the example below:

Vehicle Type	Name of Model	Price	Qty on Hand
Car			
	Maruti 800	350000	20
	Maruti ALTO	400000	10
	Hundai i10 Sports	500000	20
	Hundai i20 Sports	550000	5
Bike			
	Hero Honda Splendor	55000	50
	Bajaj Pulsar	80000	40
	Bajaj Discover	35000	20

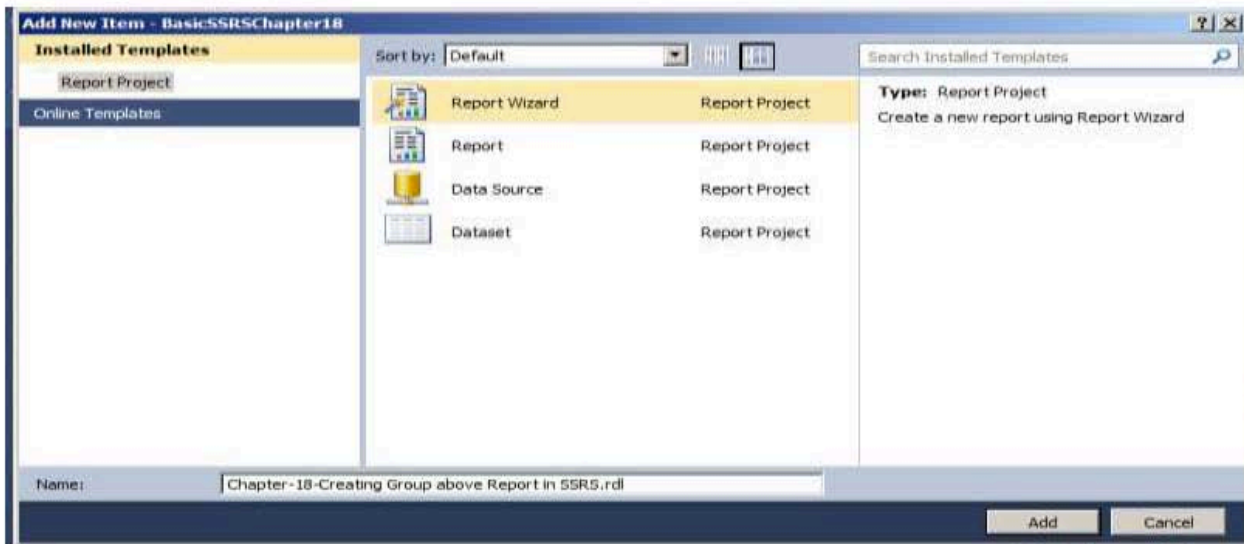
Prerequisite

1. Create Datasource connected with SQL Server 2012 sample Database Northwind “NorthwindDataSource”. (as explained in “Chapter-1-Creating a basic SSRS Report”)
2. Create a Report Server Project “BasicSSRSChapter18” using Visual Studio 2010 or higher Version (as explained in “Chapter-1-Creating a basic SSRS Report”)

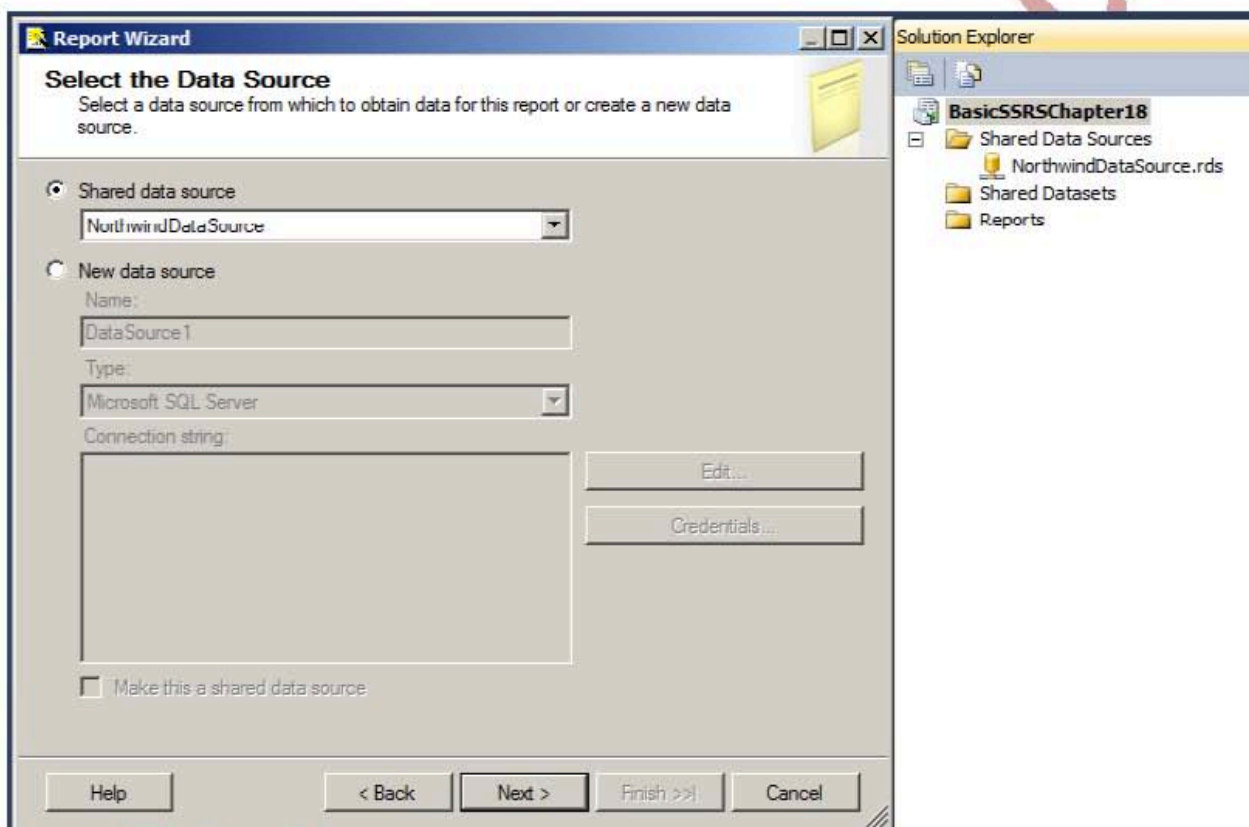
Step-1: Right Click on the Project “BasicSSRSChapter18” and select context menu Add>New Items as shown in the image.



Add New Item window will appear choose “Report Wizard” and provide the name of the report as “Chapter-18-Creating Group above report in SSRS” as shown in the image and click oK button, it will bring the Report Wizard window.

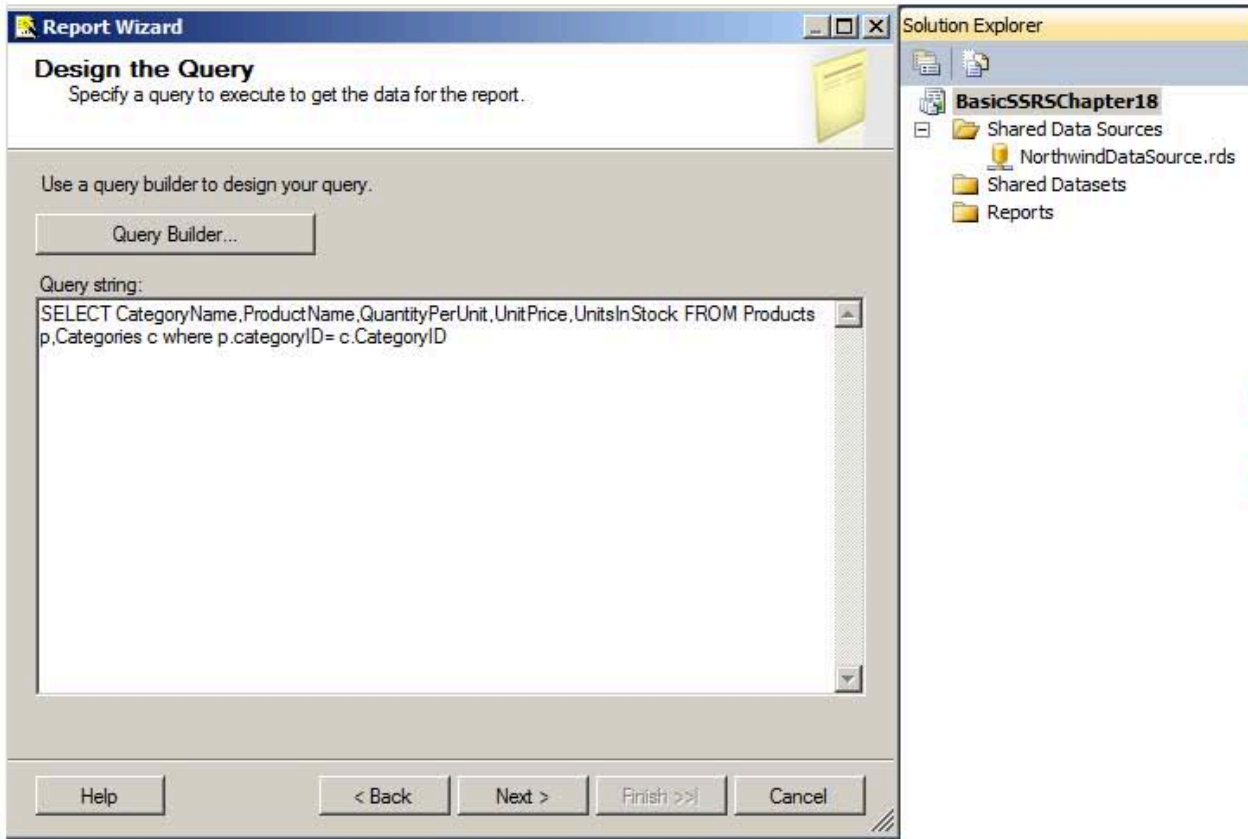


In the Report wizard window just click next as we had already created DataSource as “NorthwindDataSource”

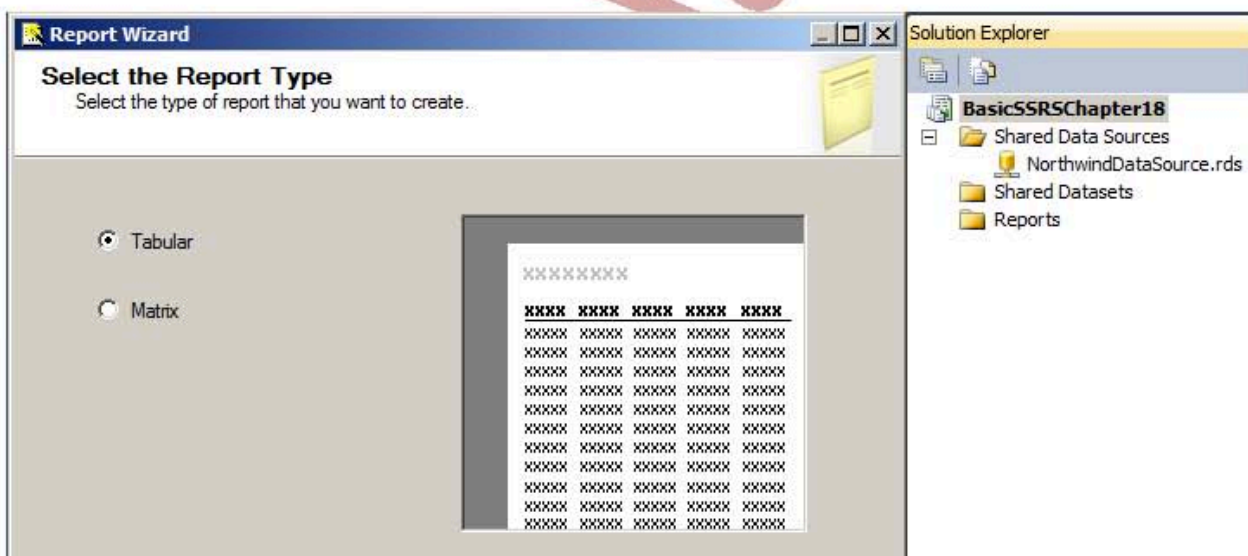


Step2: Paste the following query to Query Text Box as shown in the Image and click on next button.

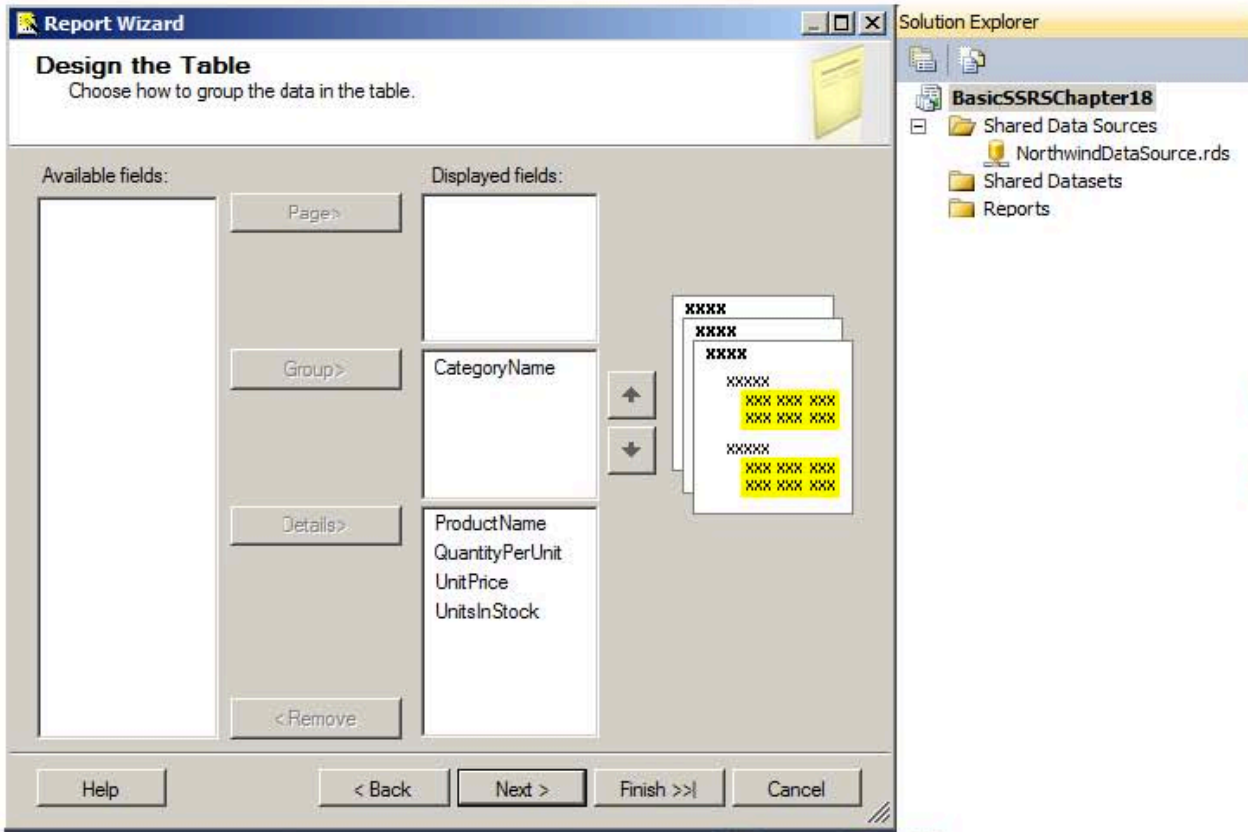
```
SELECT CategoryName,ProductName,QuantityPerUnit,UnitPrice,UnitsInStock FROM Products p,Categories c
where p.categoryID= c.CategoryID
```



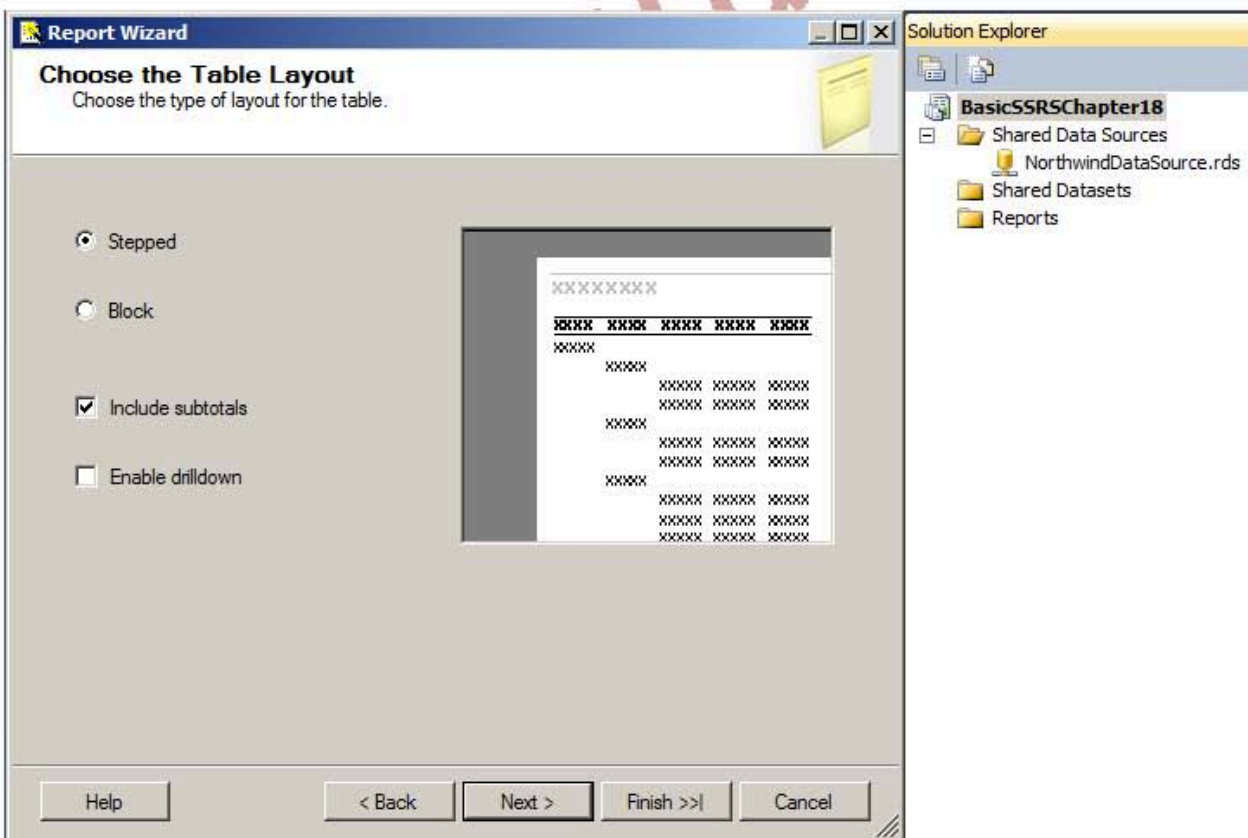
Choose tabular Report Type and click on next button



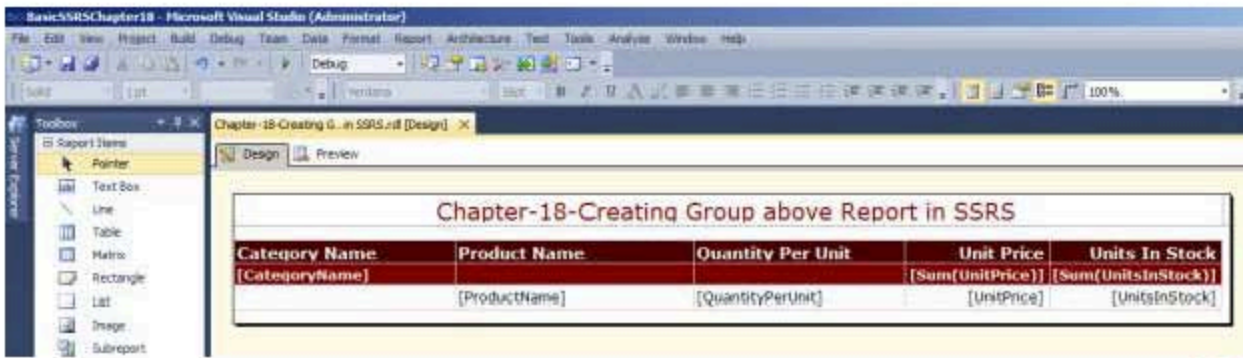
Now from available column value from the Dataset put "CategoryName" dolumn in the Group text box as shown and all other column in Detail section of Report and click on OK Button.



Choose Report Table Layout window will appear choose "Stepped" and choose "Include Subtotal" checkbox as shown in the image. Click on Next Button to complete next step.



Now choose Table Style for Report as shown below and click on next button



Now adjust the column width of Report and click on Preview button this completes "Chapter-18-Creating Group above or stepped report in SSRS".

